

Drywall sander Long handle



Model : US-TL1007

INSTRUCTION BOOK

Contents

1. Warning&Statements.....	2-5
2. Voltage.....	5-6
3. Device Application.....	6
4. Technical Specifications.....	6
5. Structure Overview.....	7
6. Installation of the drywall sander.....	8
7. Installation&Sandpaper Replacement.....	9-10
8. Replacement of the sanding pad.....	10
9. Connection set for the dust outlet.....	11
10. Switch and Governor.....	11
11. Application of the corner sanding.....	12
12. Adjustment of suction power.....	13
13. Replacement of carbon brush.....	13
14. Cleaning.....	14.

1. Warning&Statements

Note: In order to reduce the hazards of fire,electric shock and injury, etc,the statements listed below shall be taken into consideration upon application of electric tools.

1. Understand your electric tool fully by going through the user manual carefully together with identifying the application,limitation and potential risk accordingly.
2. Adopt protective appliances and act by conforming to the due order strictly.
3. Remove all the regulatory instruments, and form the habit to check about that prior to application of electric tools.
4. Keep the operational site clean. Accidents are most likely to occur in case that the electric tools are used in a messy and dirty place, or on the workbench.
5. Any operation in unsafe conditions is strictly prohibited. Do not use the electric tools in places exposed to damp/moisture, or leave them outside in rainy days. Make sure to keep the operational site bright enough.
6. Keep the children away from the devices. Certain distance shall be guaranteed as for the children in search of on-site operational experience
7. Actions shall be taken to avoid the workshop accessible by children without permission, such as locking the door, cutting off the power supply or taking away the launch key.
8. Do not use the devices at will. To ensure the overall quality of work piece and maintain security anyway, please use the devices within the design capacity.
9. Use the devices correctly, and do not operate them in overloading or abnormal status
10. Ensure appropriate clothing. Do not wear loosen clothes, gloves, tie, knot, etc. Which may result in hazards of being entangled by running devices. Prefer shoes with skid proof to avoid slipping, and cut the hair to the proper length.
11. Remember to wear protective spectacles. Abundant dust may come out in the buffing process, thus it's necessary to wear dust mask. Glasses in daily use incorporate lens with impact resistance only, which could by no means meet the safety requirements.
12. Hold the work piece tightly, if necessary, you may use a clamp or vice,
Which appears to be safer than grabbing with hands
13. Do not place your hands over the twisting disk. Meanwhile, stand still during the operations.
14. Prior to adopting the device, check if the disk suffers from defects are

rupture and the sandpaper is well-composed.

15. Ensure tight connections at the disk and other joints.

16. When using the device, remember to hold the handle firmly.

Single-hand operations and any intentions to touch the disk are strictly prohibited.

17. Before switching on, the disk shall be away from any contact of other objects.

18. Prior to application, the device shall be powered and switched on to make the disk twist at full speed. Avoid waver arising from installation error and misplaced disk. In case of any malfunction, cut off the power supply and cease the operations at hand immediately.

19. Treat the device maintenance cautiously. Keep the grinder sharp and safe at any time. In addition, follow the instructions to lubricate the device and replace appropriate accessories.

20. The power supply must be cut off during maintenance, such as the replacement of accessories, sandpaper, etc.

21. Avoid direct connection to power supply. Before power on, check if the switch for the device is off in advance.

22. Use the accessories according to the instructions. Read through the user manual in details, and select right accessories accordingly, otherwise, it may result in unexpected injuries.

23. Check if the components or devices are damaged at any time. In case of any failure or abrasion, replace the devices at once. Otherwise, it may affect working efficiency or even result in accidents.

24. Keep an eye on the device to cancel it. Make sure to switch off, and wait until the device finally ceases.

25. As for adoption of the device, only apply specified parts for replacement.

26. In case of maintenance or replacement, adopt specified spare parts only.

2. Voltage

Before connecting electric tool to the socket, make sure that the supply voltage be in accordance with rated voltage. If the former is greater than latter and the device is powered on by mistake, it may result in damage of devices and injuries of people.

As for indefinite supply voltage of socket, never try to plug for use. Besides, the damages of devices may also occur if the supply voltage falls below rated voltage.

3. Device Application

As one of our products, the device belongs to the hand-held electric tools.

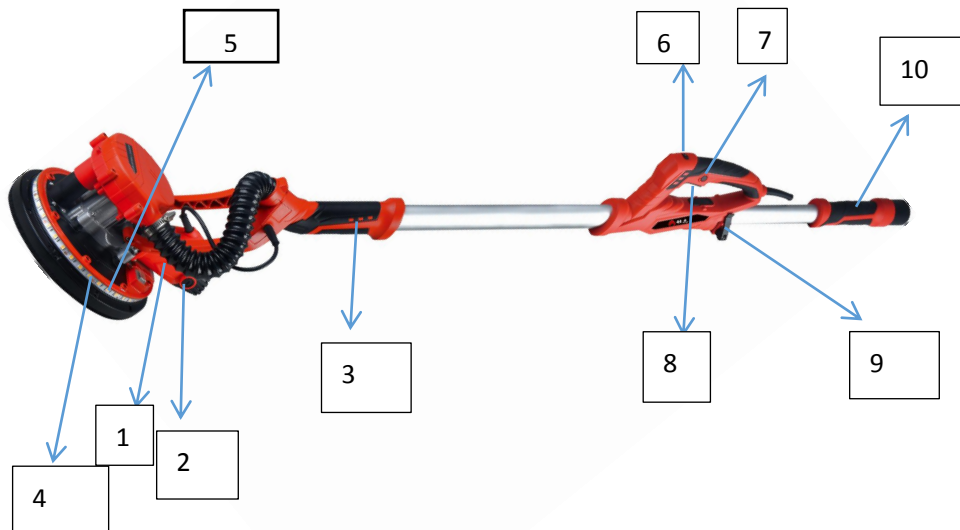
The device mainly caters for lime surface, including the interior wall, ceiling, Exterior wall, corridor, etc. Remove the painting lime mud from the wall, and make the surface even or smooth. It may promote the wall grinding efficiency and quality by workers.

With various conditions taken into consideration in the design, the device may run at high or low speed to optimize the grinding efficiency and realize user-friendly and compact design. In addition, this machine is designed with self suction function, can effectively reduce the dust when sanding.

4. Technical Specifications

Rated voltage	110-120(V)
Frequency	60(Hz)
Rated Power	800(W)
No-load Speed	1000-1600 (R/min)
Sanding Pad Dimensions	Φ 215 (mm)
Safety Standard	II/ 回
Length	1200/1800mm

5. Structure Overview (Fig.1)



1. Motor
2. Carbon brush
3. Supporting arm
4. LED Strip light
5. LED Switch
6. Speed controller
7. Lock button
8. Switch
9. Quick release button
10. Back handle

Standard Accessories

Sandpaper: 12 pcs
 Vacuum bag: 1 pc
 Carbon brush: 1 pc

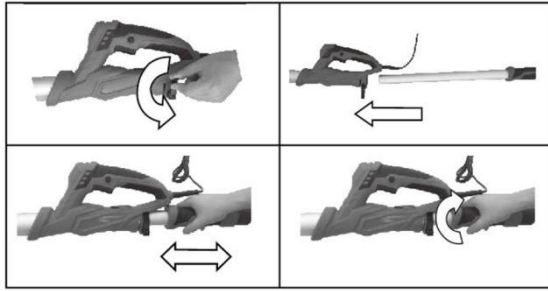
Internal hexagonal wrench: 1 pc
 2 Meter soft tube: 1 pc

6. Installation of the drywall sander(Fig2)




Before using please install the product completely. It will be dangerous when plug the socket in folded.

----Installation Guide



7. Installation & Sandpaper Replacement (Fig.3)

 **Note:** Prior to installation or removing the sandpaper, make sure to not only switch off the device, but also cut off the power supply.

-----Installation Guide

To ensure the replacement procedures, place the device on the smooth ground prior to installation. Take the sandpaper from the toolbox, and then fix it onto the disk (see Fig.2). The back of the sandpaper (Item 1) will automatically glue with the disk/adhesive disk (Item 2), making both connection and conduction available.

In order to promote the grinding efficiency, it is necessary to change the sandpaper after the device has been operational for a certain period. Firstly, switch off the device and disconnect the socket. Then, remove the previous sandpaper entirely from the disk, so as to lay new sandpaper neatly as well as facilitate future replacement. At last, fix new sandpaper in position.




Fig 3

-----Sandpaper Overview

Grinding towards the target wall and object is possible with abrasive grains and sandpaper twisting upon operations. The sandpaper is classified into various categories according to its dimensions. It is recommended to select the sandpaper in accordance with actual size of the disk. The more abrasive grains included on the sandpaper, the better flatness and parallelism can be achieved via grinding, while the grinding efficiency will

fall accordingly and vice versa. Therefore, the sandpaper ($\Phi 215\text{mm}$) is recommended upon actual needs.

 **Warning:** Prior to the sandpaper replacement or installation, do read safety precautions and installation guide carefully.

8. Replacement of the sanding pad

In the using if the sanding pad have been broken you can ask our company for new sanding pad.

-----Installation Guide

Taking off the sandpaper, using the wrench put into the holes in the center of the sanding pad then slackening clockwise to take off the old sanding pad, install the new sanding pad(Fig.4)



Fig .4

9. Connection Set for Dust Outlet

____Installation Guide(Fig.5)

Firstly, plug the connector on Dust Outlet directly into the interface for Dust Collector , and insert Component A directly and fix it tightly.

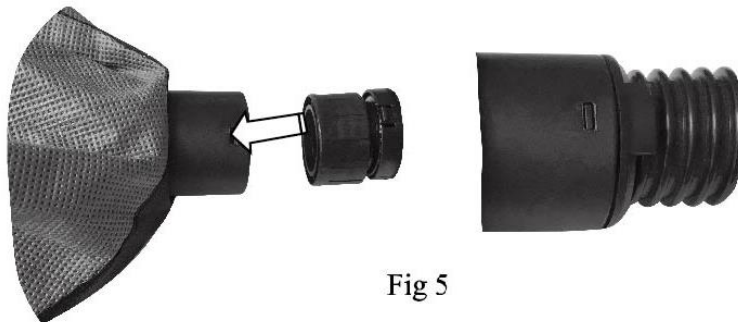


Fig 5

10. Switch and Governor (Fig.6)

This drywall sander switch is self-locking switch, when turn on the machine , just press the main switch button it can work. When press the switch button and the self-locking button the switch will be locked no need to press the switch button all the time. When turn off the machine you only need press the main switch button (no need pres the self-locking button, the machine will be turned off.)

Turn the governor to adjust the speed 1 stand for lowest speed and 5 stand for highest speed.



Fig 6

11. Application of the corner sanding (Fig.7)

This product have a partial removeable sanding disk, press the Disk disassembling knob(1) and slacked anticlockwise can remove part sanding disk. With this function it can sanding corner place easily.

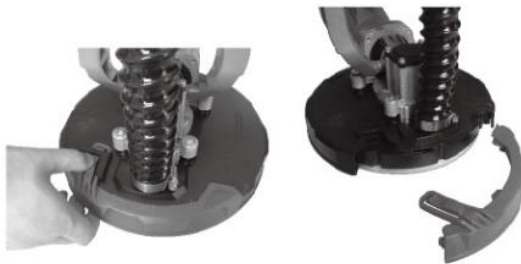


Fig 7

12. Adjustment of suction power

In order to save the worker's physical labor , this machine is designed with suction power to reduce the machine gravity. When connect to vacuum cleaner, the suction system will make the machine suck on the drywall wall , the operator can adjust the suction accordingly.

When connect the drywall sander with vacuum cleaner, the suction power can be adjusted by modify the suction adjustment knob.

13. Replacement of carbon brush

14.

When the original carbon brush is worn the machine has a set spare carbon brush for replacement .

Guide for the replacement of carbon brush :

- 1) Use the screwdriver to open the cover of the carbon brush and take out the carbon brush
- 2) Put the spare carbon brush into the Brush Carrier , use the screwdriver to rotate and fix the cover of carbon brush tightly.



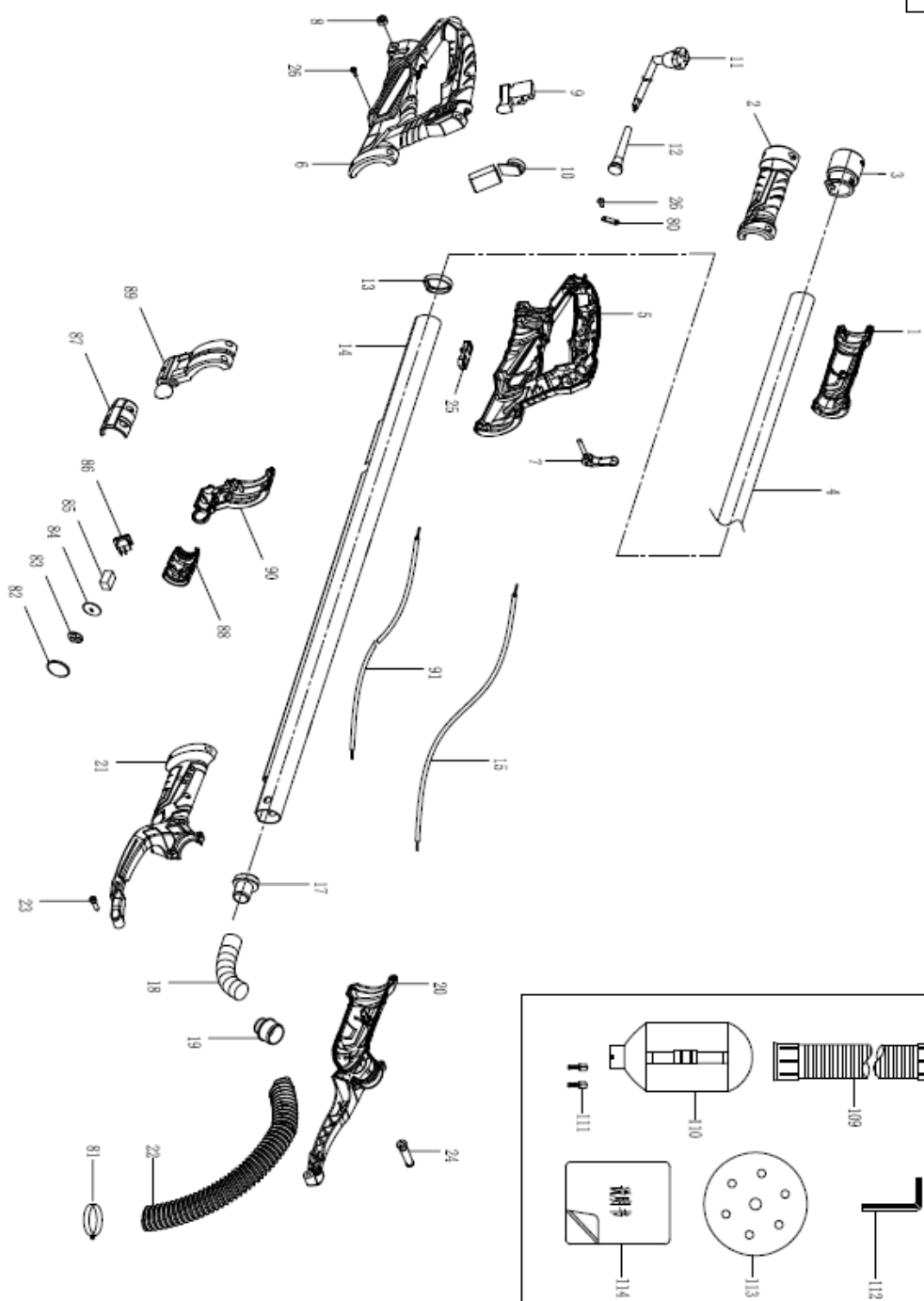
14. Cleaning

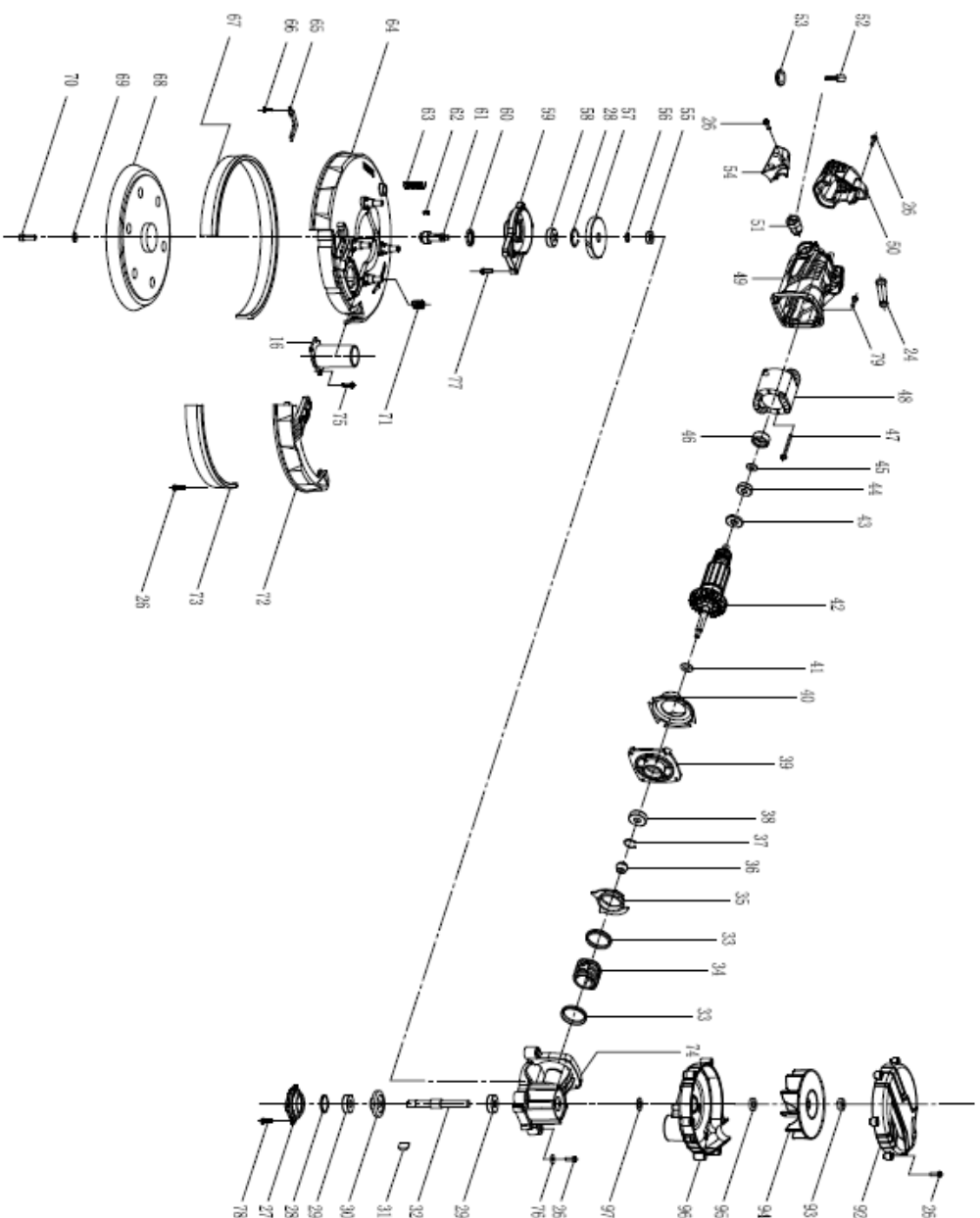
Regular cleaning shall be conducted after grinding.

Cleaning the devices frequently may help to extend operating life and reduce repair rate. It is recommended to clean the connection sets and components of electric motor without application of water.

Timely cleaning is recommended after the application of the devieces.

Clean the devices with a hairbrush and a piece of dry cloth , or simply blow it with high pressure gas.





1702 Spare Parts List

[illegible]